

# SKYJACK™

## SJ1056 TH TELEHANDLERS

AVAILABLE FOR  
RENT OR SALE

**ATS**  
EQUIPMENT INC.

### EASILY SERVICEABLE

Skyjack telehandlers extend our principle of simple reliability into material handling equipment. Our TH series is designed with all major service points easily accessible, limiting downtime and increasing our customers' utilization. With a variety of proprietary features, Skyjack's TH series offer the rental industry's best life cycle value.

### SMARTORQUE™

Using an optimized balance of engine horse power, torque, and hydraulic performance, Skyjack SMARTORQUE™ products deliver the same on-site job performance as higher power units - providing excellent performance with less engine horsepower. Less emission controlling components avoids the cost associated with their complexity, as well as the time and inconvenience required in maintaining them. SMARTORQUE™ means no Diesel Particulate Filter (DPF), no Diesel Exhaust Fluid (DEF)/AdBlue, and no other active exhaust after treatment.

### SPECIFICATIONS

Overall Width	8' 5"
Ground Clearance	19"
Turning Radius (Outside)	153"
Fuel Tank	35 gal.
Hydraulic Reservoir	43.85 gal.
Maximum Lift Capacity	10,000 lbs
Maximum Lift Height	56' 3"
Maximum Forward Reach	42' 6"
Rated Lift Capacity @ Maximum Height	4,000 lbs
Rated Lift Capacity @ Maximum Reach	400 lbs
Rated Lift Capacity @ Maximum Height (on outriggers)	6,000 lbs
Rated Lift Capacity @ Maximum Reach (on outriggers)	3,000 lbs
O/A Length - Less Forks	22' 2"
Overall Height - Stowed	8' 1"
Operating Weight	33,336 lbs
Engine	74hp / 287 lb-ft Deutz TCD 3.6L T4F
Max Travel Speed - Forward	15 mph (24 km/h)
Transmission	Dana Powershift, 3 Speeds F/R
Axles	Dana
Steering	3 mode (Front Wheel, 4 Wheel, Crab)
Tires	Foam Filled 14 x 24 16PR Grip Lug
Drawbar Pull	20,000 lbs



**ATS EQUIPMENT INC.**

**Construction Equipment & Supplies**

**Rentals • Sales • Service**

**BOSTON, MA**  
**(617) 825-3600**

**AUBURN, MA**  
**(508) 832-8500**

**REHOBOTH, MA**  
**(508) 379-6200**

**CANDIA, NH**  
**(603) 483-2100**

**SKYJACK™**

# SJ1056 TH

**TELEHANDLER**

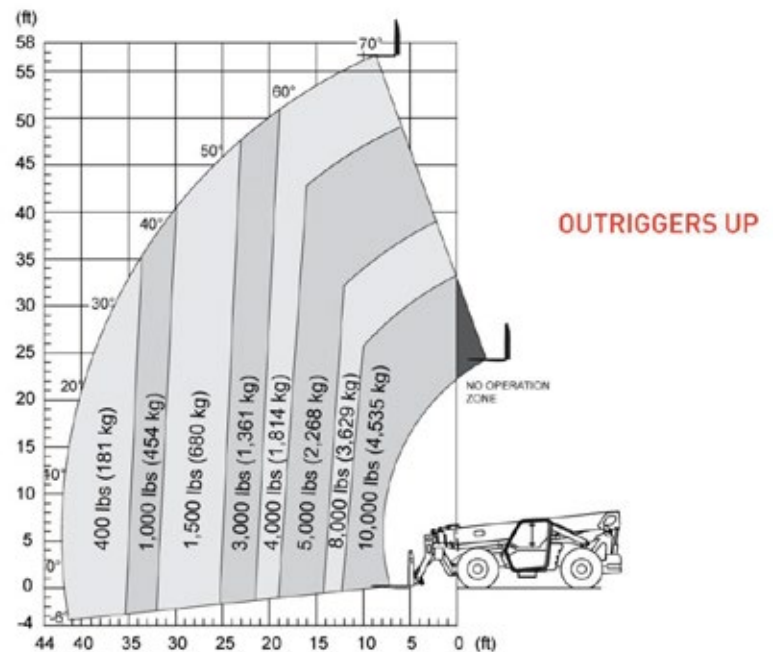
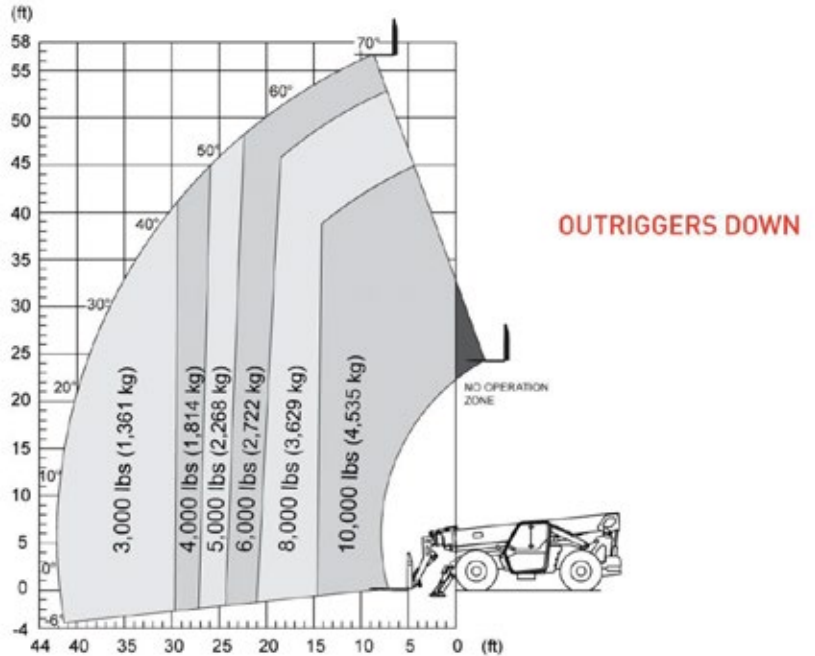
**AVAILABLE FOR  
RENT OR SALE**



[www.atsequipment.com](http://www.atsequipment.com)

**SPECIFICATIONS SJ1056 TH**

Maximum Lift Capacity	10,000 lbs (4,535 kg)
Maximum Lift Height	56' 3" (17.14 m)
Rated Lift Capacity @ Maximum Height	4,000 lbs (1,814 kg)
Rated Lift Capacity @ Max Height w. O/R	6,000 lbs (2,722 kg)
Maximum Forward Reach	42' 2" (12.85 m)
Rated Lift Capacity @ Maximum Reach	400 lbs (181 kg)
Rated Lift Capacity @ Max Reach w. O/R	3,000 lbs (1,361 kg)
O/A Length - Less Forks	22' 2" (6.75 m)
Overall Height - Stowed	8' 1" (2.47 m)
Overall Width	8' 5" (2.56 m)
Ground Clearance	19" (48.3 cm)
Turning Radius - Outside	153" (3.89 m)
Operating Weight	33,336 lbs (15,121 kg)
Engine	74hp / 287 lb-ft Deutz TCD 3.6L T4F
Max Travel Speed - Forward	15 mph (24 km/h)
Drawbar Pull	20,000 lbs
Transmission	Dana Powershift, 3 speeds F/R
Axles	Dana
Steering	3 mode (Front Wheel, 4 Wheel, Crab)
Tires	Foam-Filled 14 x 24 16PR Grip Lug
Fuel Tank Capacity	35 gal. (132 L)
Hydraulic Reservoir	43.85 gal. (166 L)



**ATS EQUIPMENT INC. Construction Equipment & Supplies Rentals • Sales • Service**

<b>BOSTON, MA</b> <b>(617) 825-3600</b>	<b>AUBURN, MA</b> <b>(508) 832-8500</b>	<b>REHOBOTH, MA</b> <b>(508) 379-6200</b>	<b>CANDIA, NH</b> <b>(603) 483-2100</b>
--	--	--	--