

Genie® TZ-50

AVAILABLE FOR
RENT OR SALE

ATS
EQUIPMENT INC.

www.atsequipment.com

TRAILER MOUNTED BOOM LIFT



ATS EQUIPMENT INC. Construction Equipment & Supplies Rentals • Sales • Service

BOSTON, MA
(617) 825-3600

AUBURN, MA
(508) 832-8500

REHOBOTH, MA
(508) 379-6200

CANDIA, NH
(603) 483-2100

AVAILABLE FOR RENT OR SALE

GENIE TZ-50

TRAILER MOUNTED BOOM LIFT



SPECIFICATIONS

Measurements

Working height max. ⁽¹⁾	55 ft 6 in
Platform height	49 ft 6 in
Entry height- extended	1 ft 8 in
Horizontal reach	29 ft 2 in
Clear out reach	23 ft 1 in
Up-and-over clearance	22 ft
A Platform length	2 ft 2.8 in
B Platform width	3 ft 8 in
C Height - stowed	6 ft 10 in
D Length- stowed	23 ft 6 in
E Width- stowed	5 ft 6 in
F Ground clearance	10 in
G Length-outrigger footprint	14 ft 4 in
H Width-outrigger footprint	14 ft 4 in

Productivity

Lift capacity (ANSI, CSA)- standard	500 lb
Lift capacity (ANSI, CSA) - rotating platform	500 lb
Lift capacity (CE/AUS) - standard	440 lb
Lift capacity (CE/AUS) - rotating platform	440 lb
Platform rotation - mechanical	-
Platform rotation - hydraulic	160°
Turntable rotation	359°
Outrigger leveling capability	
Towing speed rate	60 mph
Tongue weight - ANSI, CSA	400 lb
Tongue weight - CE	220 lb
Tire size - ANSI, CSA	ST 225/75 R15
Tire size - CE	215 R14C

Power

Power source- standard	24V (4x6V 225Ah)
Hydraulic tank capacity	4.75 gal
Hydraulic system capacity	8.0 gal

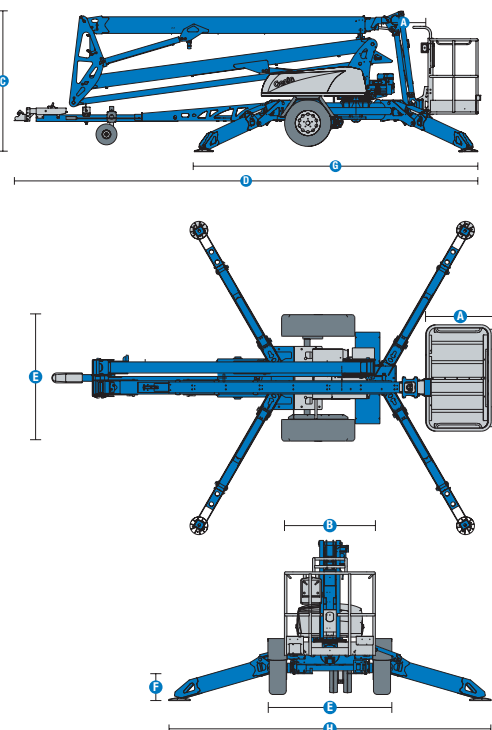
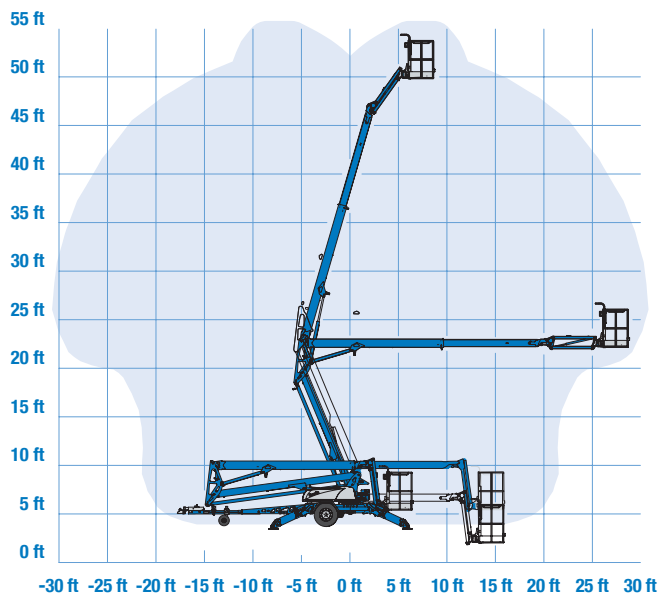
Weight⁽³⁾

Weight- ANSI, CSA, Australia	4,400 lb
------------------------------	----------

Sound and Vibration Levels

Sound Pressure level (ground workstation)	< 70 dBA
Sound Pressure level (platform workstation)	< 70 dBA
Vibrations	< 2.5 m/s ²

RANGE OF MOTION



ATS EQUIPMENT INC.

Construction Equipment & Supplies

Rentals • Sales • Service

**BOSTON, MA
(617) 825-3600**

**AUBURN, MA
(508) 832-8500**

**REHOBOTH, MA
(508) 379-6200**

**CANDIA, NH
(603) 483-2100**