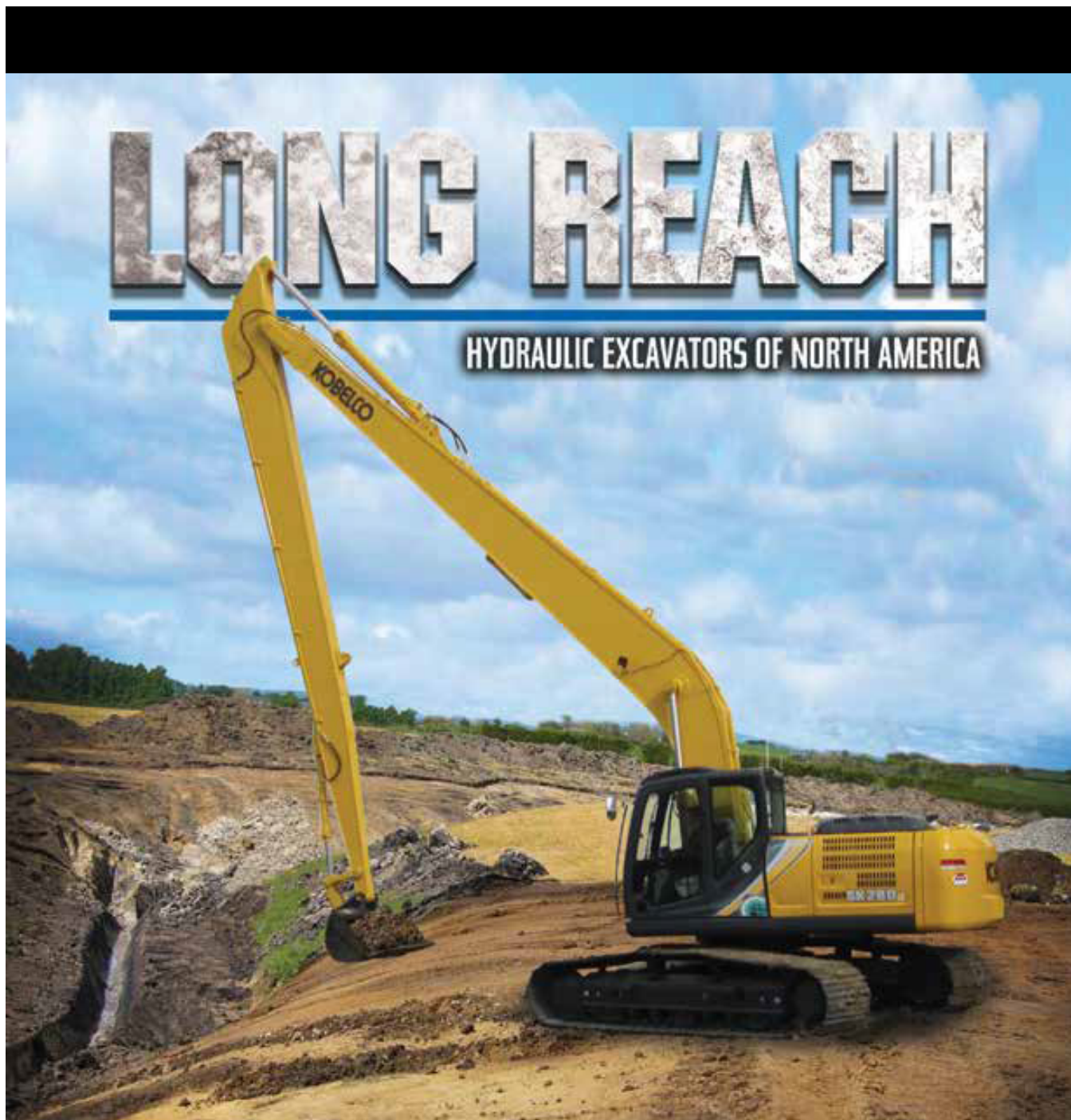


KOBELCO SK260LC-10

AVAILABLE FOR
RENT OR SALE

ATS
EQUIPMENT INC.

www.atsequipment.com



ATS EQUIPMENT INC. Construction Equipment & Supplies Rentals • Sales • Service

BOSTON, MA
(617) 825-3600

AUBURN, MA
(508) 832-8500

REHOBOTH, MA
(508) 379-6200

CANDIA, NH
(603) 483-2100

AVAILABLE FOR RENT OR SALE

KOBELCO SK260LC-10

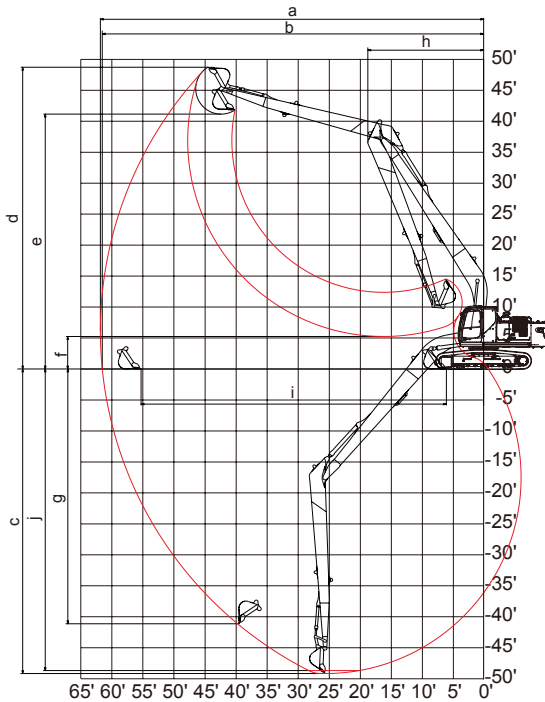
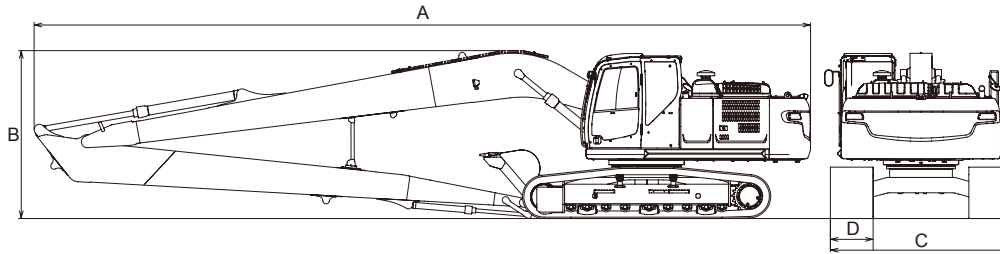


www.atsequipment.com

SK260LC-10

LONG REACH: 60'
ENGINE: HINO J05E-UN
NET POWER: 178 HP / 2,100 RPM
SWING SPEED: 10.2 RPM
OPERATING WEIGHT: 62,000 LBS
GROUND PRESSURE: 6.1 PSI

MAIN SPECIFICATIONS	SK260LC-10 LR
A. Overall Length	47' 8"
B. Overall Height	10' 4"
C. Overall Width	11' 1"
D. Shoe Width	31.5"



WORKING RANGES	SK260LC-10 LR
Long Reach Attachment	60'
Boom	33' 11"
Arm	27' 1"
a. Max Digging Reach	60' 10"
b. Max Digging Reach at Ground Level	60' 6"
c. Max Digging Depth	48' 4"
d. Max Digging Height	47' 9"
e. Max Dump Clearance	40' 5"
f. Minimum Dump Clearance	5' 2"
g. Max Vertical Wall Digging Depth	41' 8"
h. Minimum Swing Radius	18' 4"
i. Horizontal Digging Stroke at Ground Level	48' 5"
j. Digging Depth for 8' (2.4 m) Flat Bottom	47' 10"

BUCKET SELECTION CHART	Capacity (SAE)	Width	Bucket Weight	Boom / Arm 33' 11" / 27' 1"
Ditch	0.64 yd ³	48"	860 lbs	L
Ditch	0.73 yd ³	54"	900 lbs	L
Ditch	0.82 yd ³	60"	966 lbs	L

L - Used with material weight up to 2,000 lbs/yd

ATS EQUIPMENT INC. Construction Equipment & Supplies Rentals • Sales • Service

BOSTON, MA
(617) 825-3600

AUBURN, MA
(508) 832-8500

REHOBOTH, MA
(508) 379-6200

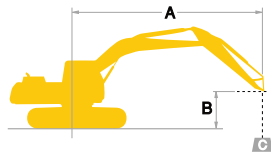
CANDIA, NH
(603) 483-2100

AVAILABLE FOR RENT OR SALE KOBELCO SK260LC-10



www.atsequipment.com

LIFT CHARTS



- Rating over front
- Rating over side or 360 degrees

A – Reach from swing centerline for arm top
B – Bucket hook height above/below ground
C – Lifting capacities in pounds



SK260LC 60 ft Boom: 33' 11", Arm: 27' 1", Bucket: Less, Counterweight: 14,950 lbs, Shoe: 31.5"																																
B	A	5'		10'		15'		20'		25'		30'		35'		40'		45'		50'		55'		At Max. Reach								
																										Radius						
40'	lb																		*2,300	*2,300					*2,120	*2,120	45' 5"					
35'	lb																		*3,340	*3,340					*2,060	*2,060	48' 9"					
30'	lb																		*3,790	*3,790	*2,680	*2,680			*2,040	*2,040	51' 5"					
25'	lb																		*3,930	*3,930	*3,460	*3,460			*2,050	*2,050	53' 6"					
20'	lb																															
15'	lb																															
10'	lb																															
5'	lb																															
GL	lb																															
-5'	lb	*4,800	*4,800	*6,380	*6,380	*10,460	*10,460	*14,140	11,590	*10,760	8,750	*8,680	6,900	*7,310	5,580	*6,350	4,590	*5,650	3,810	*5,120	3,180			*3,310	2,670	*2,550	*2,550	56' 5"				
-10'	lb	*6,240	*6,240	*7,680	*7,680	*10,990	*10,990	*14,910	10,960	*11,430	8,210	*9,230	6,480	*7,730	5,260	*6,670	4,350	*5,890	3,630	5,130	3,060							*3,070	2,650	54' 5"		
-15'	lb	*7,710	*7,710	*9,170	*9,170	*12,190	*12,190	*15,260	10,660	*11,830	7,900	*9,590	6,210	*8,030	5,040	*6,900	4,180	*5,870	3,510	5,060	2,990									*3,480	2,760	52' 8"
-20'	lb	*9,230	*9,230	*10,800	*10,800	*13,800	*13,800	*15,260	10,600	*11,970	7,780	*9,750	6,070	*8,180	4,930	6,830	4,090	5,820	3,460	*4,480	2,980											
-25'	lb	*10,830	*10,830	*12,600	*12,600	*15,760	*15,760	*14,920	10,710	*11,820	7,800	*9,690	6,070	*8,140	4,910	6,830	4,090	5,850	3,490													
-30'	lb	*12,540	*12,540	*14,590	*14,590	*18,120	17,040	*14,200	10,980	*11,360	7,970	*9,360	6,180	*7,860	5,000	*6,660	4,190															
-35'	lb	*14,360	*14,360	*16,810	*16,810	*16,810	*16,810	*13,020	11,420	*10,510	8,270	*8,670	6,420	*7,220	5,220																	
-40'	lb																															

NOTES:

- Do not attempt to lift or hold any load that is greater than these lift capacities at their specified lift point radius and heights. Weight of all accessories must be deducted from the above lift capacities.
- Lift capacities are based on machine standing on level, firm, and uniform ground. User must make allowance for job conditions such as soft or uneven ground, out of level conditions, side loads, sudden stopping of loads, hazardous conditions, experience of personnel, etc.
- Arm bucket pin is defined as lift point.
- The above lifting capacities are in compliance with SAE J/ISO 10567. They do not exceed 87% of hydraulic lifting capacity or 75% of tipping load. Lifting capacities marked with an asterisk (*) are limited by hydraulic capacity rather than tipping load.
- Operator should be fully acquainted with the Operator's and Maintenance Instructions before operating this machine. Rules for safe operation of equipment should be adhered to at all times.
- Lift capacities apply to only machines as originally manufactured and normally equipped by KOBELCO CONSTRUCTION MACHINERY CO., LTD.

ATS EQUIPMENT INC. Construction Equipment & Supplies Rentals • Sales • Service

**BOSTON, MA
(617) 825-3600**

**AUBURN, MA
(508) 832-8500**

**REHOBOTH, MA
(508) 379-6200**

**CANDIA, NH
(603) 483-2100**