

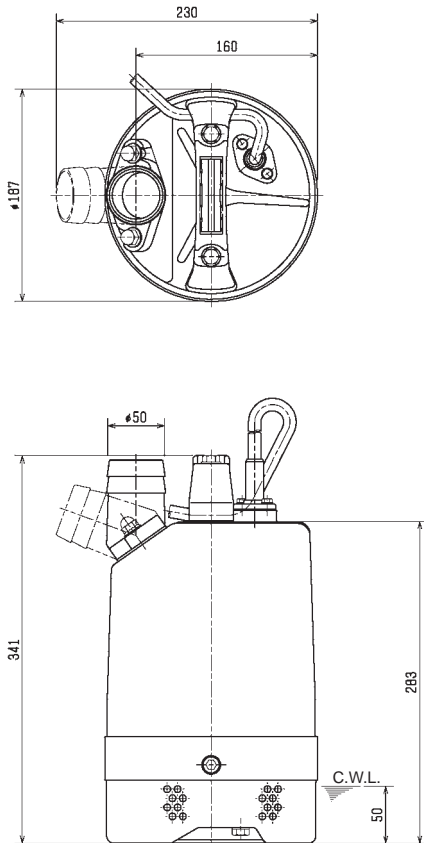


TSURUMI PUMP

LB-800-51

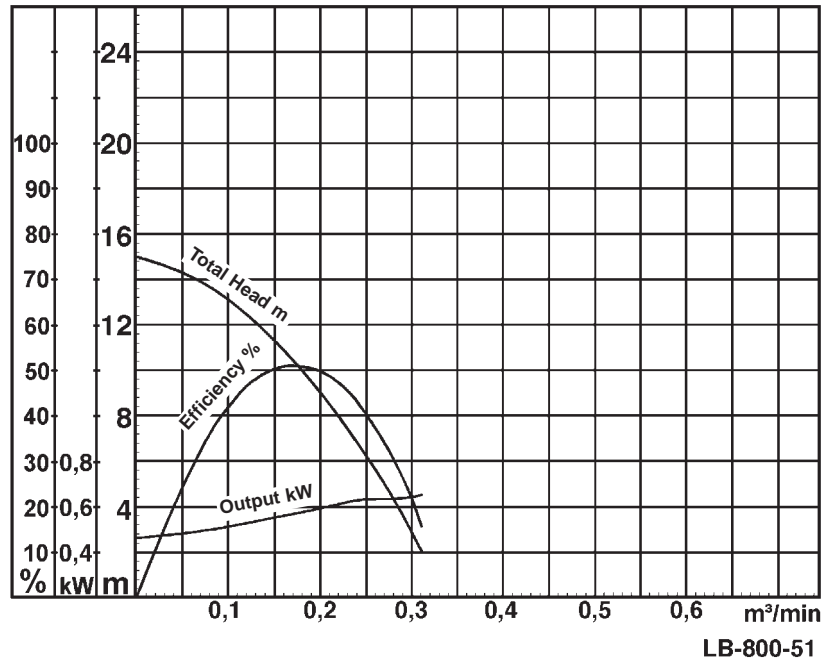
- data sheet
 - parts list
 - exploded view
 - dimensional drawing
 - sectional drawing
 - performance curve
-
- parts list as Excel-spreadsheet

Data Sheet LB-800-51



C.W.L. = Continuous running water level
Dimensions in mm

LB-800-51



LB-800-51

Classification

Electric submersible pump
Protection class IP68
Depth of submersion max. 20m
Semi-vortex impeller
Max. solid handling 6mm
Suitable for rain water, font water, ground water, sand carrying water

Electric Motor

Dry-type submersible induction motor
Insulation class E, 2 poles, 2720 r.p.m.
Capacitor start
Voltage: 110V/230V, 50Hz, 1-phase
Power input: 1,15kW
Power output: 0,75kW
Nominal current: 9,6A(110V) / 5,0A(230V)
Start current: 21,9A(110V) / 12,3A(230V)

Electric cable

10m H07RN-F 3Cx1,5mm² (110V)
10m H07RN-F 3Cx1mm² (230V)

Motor Protection

Circle thermal protector
(snap-action bi-metal device)

Shaft Seal

Double mechanical seal in oil bath
Primary Seal:
silicon carbide on silicon carbide
Secondary Seal:
carbon on ceramic

Bearings

Shielded ball bearings, maintenance-free

Materials

Impeller:	Urethane rubber
Casing:	BR + Natural rubber
Suction Plate:	Steel plate + Urethane rubber
Motor frame:	Aluminium alloy casting
Shaft:	SUS403 (EN-X6Cr13)

Discharge Connection

2" (50mm) BS-Coupling (threaded flange)

Weight

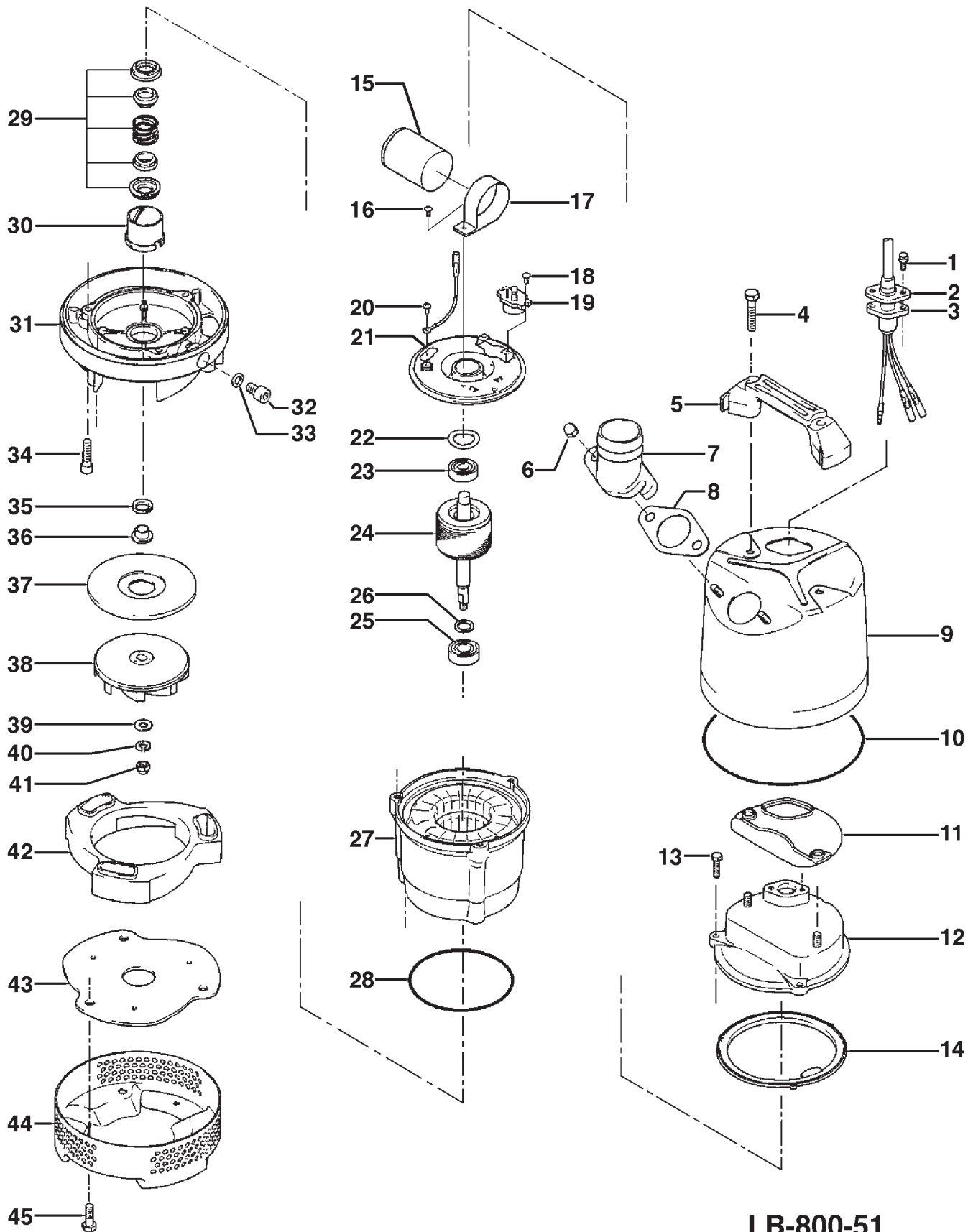
13,2 kg (dry weight of the pump without cable)

LB-800-51

19.06.2006

ITEM	CODE No.	DESCRIPTION	Q'TY	SIZE	MATERIAL	WEIGHT kg	REMARKS
1	140-427-17	Hex.Bolt (w/plain washer)	2	M5x15	SUS304	0,001	
2	003-100-13	Gland	1		SUS316	0,010	
3	001-873-18	Cabtyre Cable Set (10m) 110V-50Hz (EN	1	H07RN3Cx1.5mm2(PCE)	LB(HAR)		
3	001-453-18	Cabtyre Cable Set (10m) 220/230/240V-	1	H07RN3Cx1mm2(CEE-W/R	LB(HAR)		
4	140-000-13	Hex.Bolt (w/plain washer)	2	M8x65	SUS304	0,025	
5	068-000-06	Handle	1	LB-250/480-52/62	Resin		
6	141-144-10	Flanged Hex. Nut	2	M8	SUS304		
7	032-000-12	Hose Coupling 110V-50Hz (ENG)	1	50mm(LB-480-52/62)	ADC		
7	032-000-23	Hose Coupling 220/230/240V-50Hz (EU	1	BSPT-2, LB-480	ADC		
8	121-587-17	Packing	1	LB-250/480-51/61	NBR	0,001	*
9	065-000-22	Outer Cover	1		SPC		
10	122-453-16	O-Ring	1	172xd2.7	NBR	0,001	*
11	121-434-18	Packing	1	LB3-250/480	Synthetic Rubb	0,013	*
12	051-000-22	Motor Head Cover	1		ADC		
13	140-396-16	Hex.Bolt (w/Spring Washer/Plain Washe	3	M6x20	SUS304	0,001	
14	121-000-72	Packing	1	d121xd140x2.8t	NBR		*
15	076-000-31	Capacitor	1	80MF-250VAC(d50x85L)			
16	143-086-22	Pan Screw (w/Spring Washer)	1	M4x8	SWRM	0,001	
17	127-000-34	Capacitor Fixing Plate	1	d50	SPC		
18	143-127-13	Pan Screw (w/Spring Washer/Plain Was	2	M4x8	SWRM		
19	053-000-63	Motor Protector 110V-50Hz (ENG)	1	KA142-BBTL25F	(T.C)		
19	053-000-28	Motor Protector 220/230/240V-50Hz (EU	1	KA142-LPTL25F	(T.C)		
20	140-000-44	Hex.Bolt (w/Spring Washer/Plain Washe	1	M4x8	SWRM		
21	050-000-48	Motor Bracket	1		SECD		
22	142-000-41	Wave Washer	1	#6201(T=0.4)	S65CM		
23	052-100-15	Bearing	1	6201ZZC3		0,040	
24	055-001-26	Rotor	1Set	w/Bearing			
25	052-152-12	Bearing	1	6302ZZC3		0,090	
26	061-175-19	Bearing Collar	1	d15xd23x1.6t	SPC		
27	056-004-14	Stator 110V-50Hz (ENG)	1Set	w/Frame			
27	056-004-16	Stator 220/230/240V-50Hz (EUR)	1Set	w/Frame			
28	122-133-17	O-Ring	1	G-110	NBR	0,001	*
29	025-291-10	Mechanical Seal (for EUR/ENG)	1	W-14VL	SiC+CCBN	0,050	Oil ISO VG 32 (155ml)
30	030-000-09	Oil Lifter	1	W-14VL	Resin	0,009	
31	029-000-72	Oil Casing	1	LB-750-51/61	ADC		
32	035-124-12	Oil Plug	1	M10x15	SUS304		
33	121-246-11	Packing	1	d10.3xd16x2t	PE	0,001	*
34	140-252-19	Hex. Socket Cap Bolt	3	M6x20	SUS304	0,001	
35	122-441-11	V-Ring	1	VR-14	NBR	0,001	
36	071-292-14	Shaft Sleeve	1	LB3-250/480	SUS304	0,001	
37	031-000-12	Wear Ring	1	LSC1.4S-51/61	SPC+Urethane Rubber		
38	021-000-52	Impeller (50Hz)	1	LB-800-51	Urethane Rubb	0,190	
39	142-127-10	Plain Washer	1	M8	SUS304	0,001	
40	142-163-18	Spring Washer	1	M8	SUS304	0,001	
41	141-030-12	Hex.Nut	1	M8	SUS304	0,001	
42	020-000-43	Pump Casing	1	LB-750	BR+NR		
43	022-001-27	Suction Cover	1	LB-750	SPC		
44	023-547-18	Strainer Stand	1	LB-250/480-51/61	SPC	0,570	
45	140-000-14	Hex.Bolt (w/plain washer)	3	M8x20	SUS304		
		<Packing O-Ring Set>					
	173-001-20	Packing O-Ring Set	1Set	(*)			

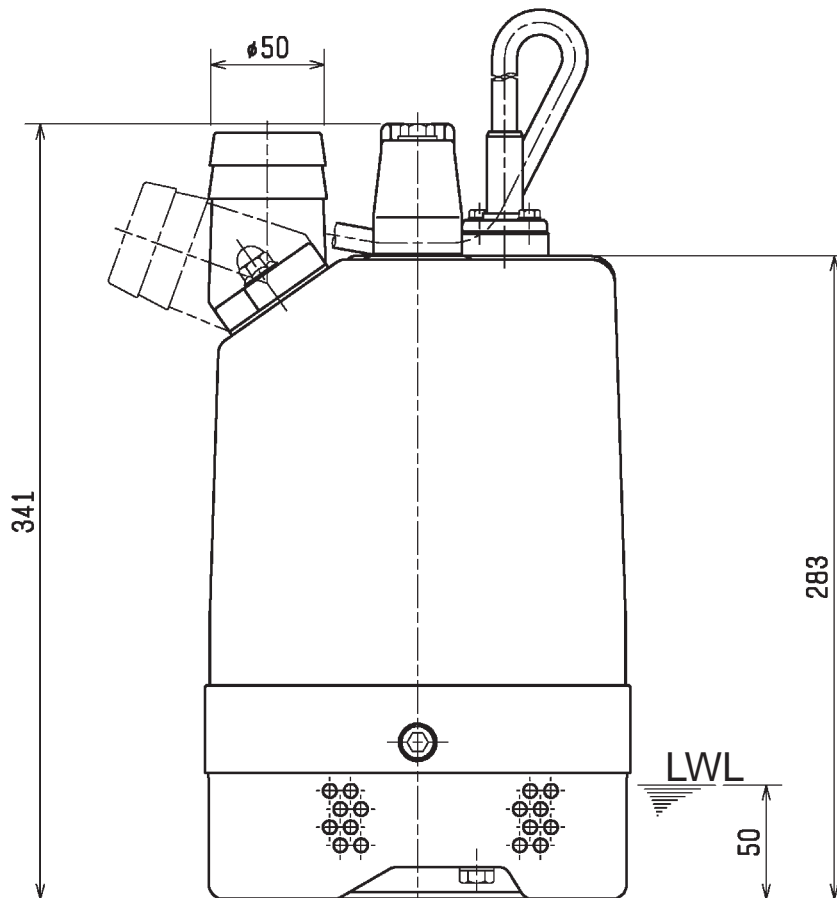
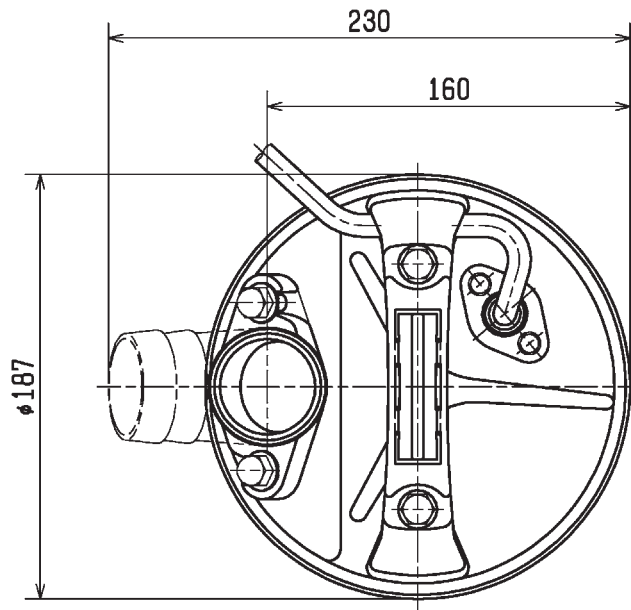
Exploded View LB-800-51



LB-800-51

Dimensional Drawing LB-800-51

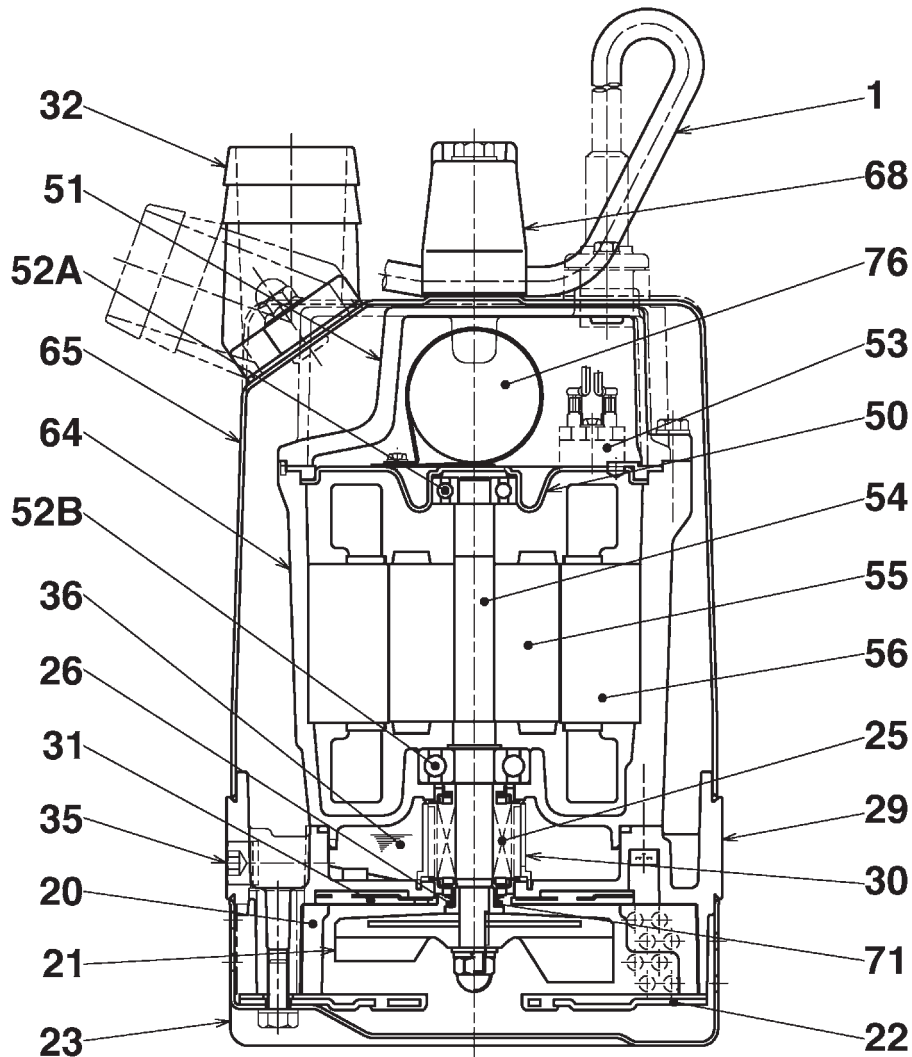
Dimensions in mm



LWL: Lowest Running Water Level

LB-800-51

Sectional Drawing LB-800-51



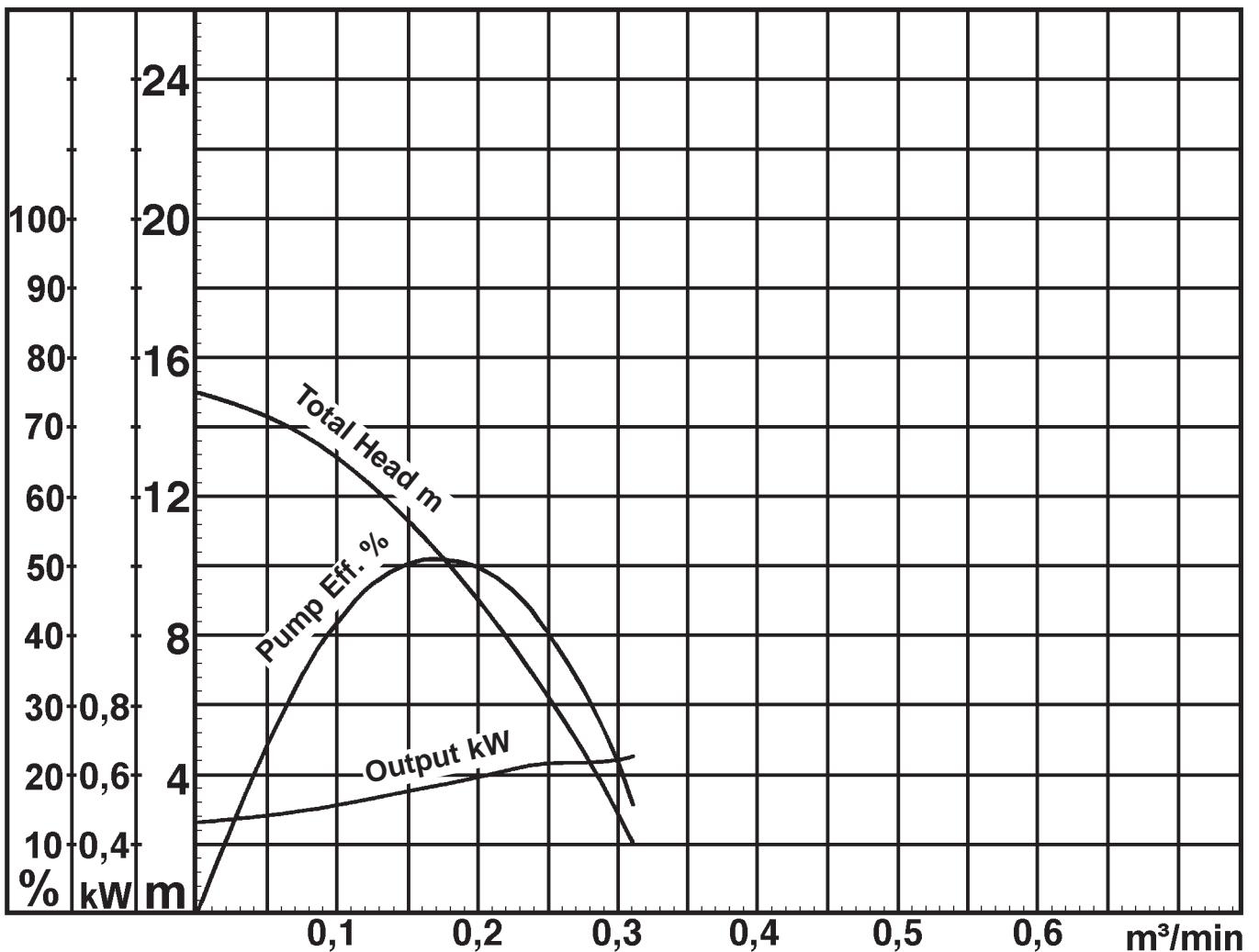
LB-800-51

No.	Description	Qty.	Remarks	No.	Description	Qty.	Remarks
1	Cabtyre Cable	1	H07RN-F	51	Motor Head Cover	1	Aluminium Die Casting
20	Pump Casing	1	BR + Natural Rubber	52A	Upper Bearing	1	6201ZZC3
21	Impeller	1	Urethane Rubber	52B	Lower Bearing	1	6302ZZC3
22	Suction Cover	1	Steel Plate + Urethane Rubber	53	Motor Protector	1	
23	Strainer Stand	1	Steel Plate	54	Shaft	1	SUS403 (EN-X6Cr13)
25	Mechanical Seal	1	W-14VL	55	Rotor	1	
26	V-Seal	1	NBR	56	Stator	1	
29	Oil Casing	1	Aluminium Die Casting	64	Motor Frame	1	Aluminium Die Casting
30	Oil Lifter	1	Plastic	65	Outer Cover	1	Steel Plate
31	Wearing Plate	1	Urethane Rubber	68	Handle	1	Plastic
32	Hose Coupling	1	Aluminium Die Casting	71	Shaft Sleeve	1	SUS304 (EN-X5CrNi18-10)
35	Oil Plug	1	SUS304 (EN-X5CrNi18-10)	76	Capacitor	1	
36	Lubricant		Turbine Oil (ISO VG32)				
50	Motor Bracket	1	Steel Plate				

Pump Performance Curve

LB-800-51

Discharge Bore	50 mm
Total Head	max.15 m
Capacity	max. 0,31 m ³ /min
Motor Output	0,75 kW
Motor Input	1,15 kW
Phase	1
Voltage	110/230 V
Frequency	50 Hz
Rated Current	9,6/5,0 A
Starting Current	21,9/12,3 A
Poles	2
Revolution	S.S. 2720 r.p.m.
Starting Method	Capacitor
Insulation Class	E



LB-800-51