

**SKYJACK™**

**SJ 66T**

**TELESCOPIC BOOM LIFT**

**T SERIES**

AVAILABLE FOR RENT AT

**ATS**  
EQUIPMENT INC.

[www.atsequipment.com](http://www.atsequipment.com)



**ATS EQUIPMENT INC.**

**Construction Equipment & Supplies**

**Rentals • Sales • Service**

**BOSTON, MA**  
**(617) 825-3600**

**AUBURN, MA**  
**(508) 832-8500**

**CANDIA, NH**  
**(603) 483-2100**

# Skyjack SJ 66T

**ATS EQUIPMENT INC.**  
[www.atsequipment.com](http://www.atsequipment.com)

## TELESCOPIC BOOM LIFT - T SERIES

Specifications	SJ 66T
Work Height	72'
Platform Height	66'
Horizontal Reach	57'
Platform Size	36" x 96"
Stowed Width	96"
Tailswing	47"
Stowed Height	101"
Stowed Length	33' 11"
Wheelbase	96"
Ground Clearance	16"
Platform Rotation	180°
Jib Length	5'
Jib Range +/-	63° / 66°
Weight	27,300 lbs
Gradeability - 4WD	50%
Turning Radius (Inside) - 4WD	111'
Turning Radius (Outside) - 4WD	199"
Axle Oscillation	10"
Drive Speed (stowed)	4.5 mph
Drive Speed (raised)	0.5 mph
Capacity	500 lbs
Maximum # of Persons	2

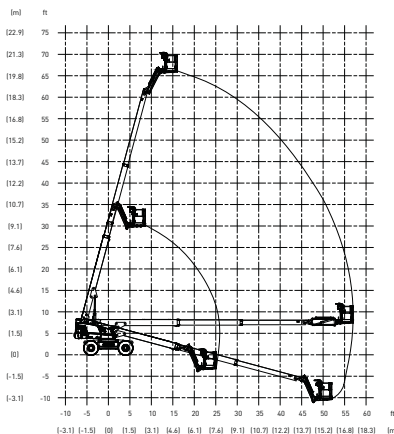


### STANDARD FEATURES

- Drivable at full height
- Axle based 4WD
- "Detroit Locker" type rear differential and limited slip front differential
- Oscillating axle
- Wet disc SAHR brakes (front and rear axle)
- 65hp Deutz diesel engine
- Swing out engine tray
- Swing up fiberglass cowlings
- 360° continuous turret rotation
- Direction sensing drive and steer controls
- Proportional controls
- Relay based control system
- Color coded and numbered wiring system
- 50% gradeability
- 15 x 19.5 grip lug air-filled tires
- 110V AC outlet on platform with GFI
- Tilt alarm with drive cut-out
- All motion alarm
- Operator horn
- Modular platform railing system
- Spring hinged gate
- Lanyard attachment points
- Tie down/lifting lugs

### ADDED ITEMS †

- Cold weather start kit
- Diesel scrubber
- Air-filled tires with tire sealant



**SJ 66T REACH DIAGRAM**

**ATS EQUIPMENT INC. Construction Equipment & Supplies Rentals • Sales • Service**

**BOSTON, MA**  
**(617) 825-3600**

**AUBURN, MA**  
**(508) 832-8500**

**CANDIA, NH**  
**(603) 483-2100**