

# SKYJACK™

# SJ519 TH

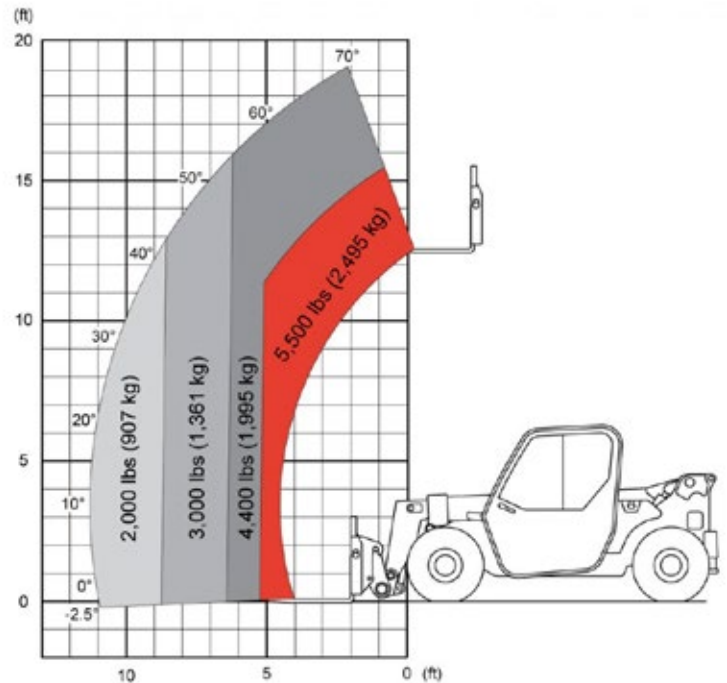
## TELEHANDLER

AVAILABLE FOR  
RENT OR SALE

**ATS**  
EQUIPMENT INC.

[www.ats-equipment.com](http://www.ats-equipment.com)

SPECIFICATIONS	SJ519 TH
Maximum Lift Capacity	5,500 lbs
Maximum Lift Height	19' 1"
Rated Lift Capacity @ Maximum Height	4,400 lbs
Maximum Forward Reach	11' 1"
Rated Lift Capacity @ Maximum Reach	2,000 lbs
Overall Length - Less Forks	13' 5"
Overall Height - Stowed	6' 4"
Overall Width	5' 11.5"
Ground Clearance	11"
Turning Radius - Outside	125"
Operating Weight†	10,500 lbs
Engine	74hp/184 lb-ft Deutz TCD 2.2L T4F
Max Travel Speed - Forward	15mph
Drawbar Pull	8,700 lbs
Breakout Force	10,600 lbs
Transmission	Hydrostatic, 1 F/R
Axles	Dana
Steering	3 Mode (Front Wheel, 4 Wheel, Crab)
Tires	Pneumatic 12 x 16.5 12PR Grip Lug
Fuel Tank Capacity	15.1 gal.
Hydraulic Reservoir	18.7 gal.



**ATS EQUIPMENT INC. Construction Equipment & Supplies Rentals • Sales • Service**

**BOSTON, MA**  
**(617) 825-3600**

**AUBURN, MA**  
**(508) 832-8500**

**REHOBOTH, MA**  
**(508) 379-6200**

**CANDIA, NH**  
**(603) 483-2100**

# SKYJACK™

## SJ519 TH

### TELEHANDLERS

**AVAILABLE FOR  
RENT OR SALE**



#### EASILY SERVICEABLE

Skyjack telehandlers extend our principle of simple reliability into material handling equipment. Our TH series is designed with all major service points easily accessible, limiting downtime and increasing our customers' utilization. With a variety of proprietary features, Skyjack's TH series offer the rental industry's best life cycle value.

#### FLEXCAB™

Skyjack's TH series telehandlers feature an innovative cab design that allows fleet operators to easily convert between open and enclosed cabs with simple hand tools, providing increased flexibility for fleet movement and fast response to customer demands. Easily sourced flat glass panels with no custom curved profiles and a bolt-on/bolt-off window retention system ensures minimal downtime and incurred costs for repairing damaged glass in the field.



#### SPECIFICATIONS

Overall Width	5' 11.5"
Ground Clearance	11"
Wheelbase	8' 1"
Turning Radius (Outside)	125"
Fuel Tank	15.1 gallon
Hydraulic Reservoir	18.5 gallon
Breakout force	10,600 lbs
Maximum Lift Capacity	5,500 lbs
Maximum Lift Height	19' 1"
Maximum Forward Reach	11' 1"
Rated Lift Capacity @ Maximum Height	4,400 lbs
Rated Lift Capacity @ Maximum Reach	2,000 lbs
O/A Length - Less Forks	13' 5"
Overall Height - Stowed	6' 4"
Operating Weight	10,500 lbs
Engine	74 hp/184 lb-ft Deutz TCD 2.2L T4F
Max Travel Speed - Forward	15mph (24 km/h)
Transmission	Hydrostatic, 1 F/R
Axles	Dana
Steering	3 Mode (Front Wheel, 4 Wheel, Crab)
Tires	Pneumatic 12 x 16.5 12PR Grip Lug
Drawbar Pull	8,700 lbs

**ATS EQUIPMENT INC. Construction Equipment & Supplies Rentals • Sales • Service**

**BOSTON, MA**  
**(617) 825-3600**

**AUBURN, MA**  
**(508) 832-8500**

**REHOBOTH, MA**  
**(508) 379-6200**

**CANDIA, NH**  
**(603) 483-2100**