

# KOMATSU PC400LC-7

HYDRAULIC EXCAVATOR

AVAILABLE FOR RENT AT

**ATS**  
EQUIPMENT INC.

[www.atsequipment.com](http://www.atsequipment.com)



**FLYWHEEL HORSEPOWER 330HP @ 1850 rpm**  
**OPERATING WEIGHT 95,000 lbs**  
**BUCKET CAPACITY 42" / 2.09 yd<sup>2</sup>**

**ATS EQUIPMENT INC. Construction Equipment & Supplies Rentals • Sales • Service**

**BOSTON, MA**  
**(617) 825-3600**

**AUBURN, MA**  
**(508) 832-8500**

**CANDIA, NH**  
**(603) 483-2100**

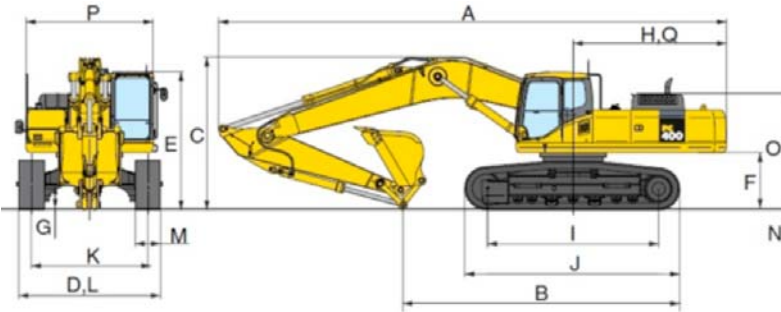
# KOMATSU PC400LC-7

**ATS EQUIPMENT INC.**  
www.atsequipment.com

## Hydraulic Excavator

### OPERATING WEIGHTS (APPROXIMATE)

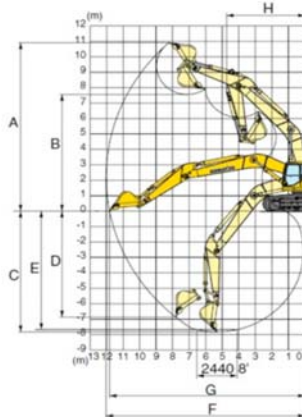
Flywheel Horsepower **330HP @ 1850 rpm**  
 Operating Weight **95,000 lbs**  
 Bucket Capacity **42" / 2.09 yd<sup>3</sup>**



### DIMENSIONS

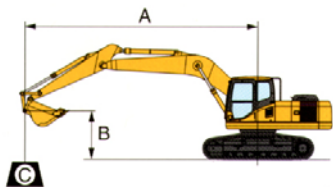
	Arm Length	13' 1"
A	Overall Length	39' 2"
B	Length on Ground	20' 9"
C	Overall Length (to top of boom)	12' 9"
D	Overall Width	11' 11 1/2"
E	Overall Height (to top of cab)	10' 9"
F	Ground clearance, counterweight	4' 4"
G	Ground clearance (minimum)	1' 10"
H	Tail swing radius	12' 0"
I	Track length on ground	14' 3"
J	Track length	17' 7"
K	Track Gauge	9' 0"
L	Width of Crawler	11' 3"
M	Shoe Width	27' 6"
N	Grouser height	1.5"
O	Machine cab height	8' 11"
P	Machine cab width	9' 10"
Q	Distance, swing centre to rear end	11' 10"

### WORKING RANGE



	Arm	13' 1"
A.	Maximum digging height	36' 2"
B.	Maximum dumping height	25' 4"
C.	Maximum digging height	27' 8"
D.	Maximum vertical wall digging depth	23' 11"
E.	Maximum digging depth of cut for 8' level	27' 3"
F.	Maximum digging reach	41' 3"
G.	Maximum digging reach at ground level	40' 7"
H.	Minimum swinging radius	15' 9"
SAE Rating	Bucket digging force at power max	53,790 lbs
	Arm crowd force at power max	41,450 lbs
ISO Rating	Bucket digging force at power max	60,630 lbs
	Arm crowd force at power max	42,770 lbs

### LIFTING CAPACITY WITH LIFTING MODE ON MULTI-FUNCTION COLOR MONITOR



A: Reach from swing center  
 B: Bucket hook height  
 C: Lifting capacity  
 Cf: Rating over front  
 Cs: Rating over side  
 MAX: Rating at maximum reach

**ARM 13' 1"**  
**BUCKET 2.09 YARD**  
**SHOE 35 1/2 TRIPLE GROUSER**

B \ A	10'		15'		20'		25'		30'		35'		MAXIMUM	
	Cf	Cs	Cf	Cs	Cf	Cs	Cf	Cs	Cf	Cs	Cf	Cs	Cf	Cs
25'									*17,500	14,700			*12,100	*12,100
20'									*19,100	14,500			*12,100	11,100
15'							*22,600	19,300	*20,200	14,100	*15,300	10,400	*12,300	10,000
10'			*41,800	40,600	*31,100	26,200	*25,300	18,300	*21,700	13,500	17,300	10,200	*12,900	9,400
5'			*49,700	37,700	*35,300	24,500	*27,700	17,400	21,900	12,900	17,000	9,900	*14,000	9,200
0'	*21,300	*21,300	*53,000	35,800	*38,000	23,200	28,600	16,600	21,400	12,500	16,700	9,600	*15,600	9,300
-5'	*30,900	*30,900	*52,700	35,000	*38,600	22,500	28,000	16,100	21,100	12,200			17,100	9,800
-10'	*42,700	*42,700	*49,600	35,000	*37,200	22,300	27,900	16,000	21,150	12,100			19,000	11,000
-15'	*57,700	*57,700	*43,600	35,600	*33,300	22,600	*25,700	16,100					*20,300	13,100
-20'	*44,300	*44,300	*33,800	*33,800	*25,700	23,300							*19,400	17,800

\*Load is limited by hydraulic capacity rather than tipping. Ratings are based on SAE Standard No. J1097. Rated loads do not exceed 87% of hydraulic lift capacity or 75% of tipping load.