

AVAILABLE FOR RENT AT



# KOMATSU



# PC300LC-7

**HYDRAULIC EXCAVATORS**

**ATS EQUIPMENT INC. Construction Equipment & Supplies Rentals • Sales • Service**  
**BOSTON MA - (800) 491-8565 (TOLL FREE) CANDIA NH - (866) 491-8565 (NH/MA TOLL FREE)**

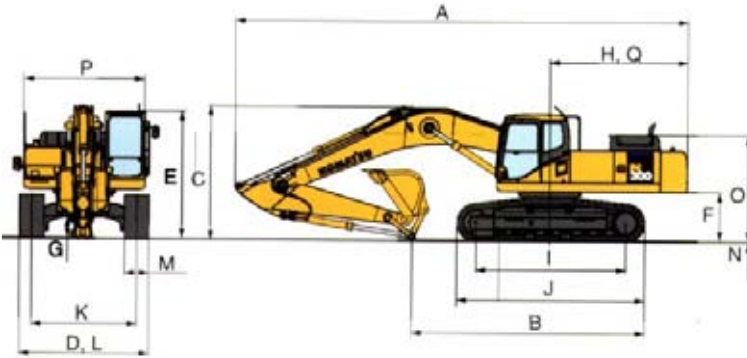
# KOMATSU PC300LC-7

**ATS EQUIPMENT INC.**  
**BOSTON MA - (800) 491-8565**  
**CANDIA NH - (866) 491-8565**

## Hydraulic Excavator

### OPERATING WEIGHTS (APPROXIMATE)

Net horsepower **242 HP**  
 Operating weight **74,000 lb**

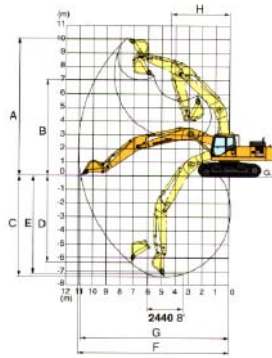


### DIMENSIONS

	Arm Length	10'5"
A	Overall length	36'7"
B	Length on ground (transport)	19'5"
C	Overall height (to top of boom)	10'9"
D	Overall width	11'1"
E	Overall height (to top of cab)	10'4"
F	Ground clearance, counterweight	4'5"
G	Minimum ground clearance	1'9"
H	Tail swing radius	9'8"
I	Track length on ground	12'7"
J	Track length	15'3"
K	Track gauge	8'6"
L	Width of crawler	11'1"
M	Shoe width	31.5"
N	Grouser height	1.0"
O	Machine cab height	6'11"
P	Machine cab width	8'11"
Q	Distance, swing center to rear end	9'6"

### WORKING RANGE & BUCKET/ARM COMBINATION

	Arm	10'5"
A.	Maximum digging height	33'6"
B.	Maximum dumping height	23'4"
C.	Maximum digging depth	24'3"
D.	Maximum vertical wall digging depth	21'3"
E.	Maximum digging depth of cut for 8' level	23'7"
F.	Maximum digging reach	36'5"
G.	Maximum digging reach at ground level	35'10"
H.	Minimum swing radius	14'2"
	Bucket digging force at power max	44,970 lb
	Arm crowd force at power max	37,040 lb

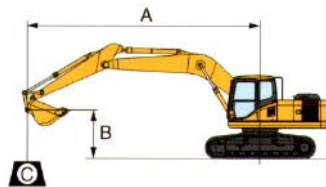


### LIFTING CAPACITY

Conditions:

- Boom length: 21'3"
- Bucket: 1.57 yd<sup>3</sup> (SAE heaped)
- Bucket weight: 1830lb
- Track Shoes: 33.5"

- A: Reach from swing center
- B: Bucket hook height
- C: Lifting capacity
- Cf: Rating over front
- Cs: Rating over side
- MAX: Rating at maximum reach



*\*Load is limited by hydraulic capacity rather than tipping. Ratings are based on SAE Standard No. J1097. Rated loads do not exceed 87% of hydraulic lift capacity or 75% of tipping load.*

### PC300LC-7 Arm: 10'5"

Unit: lb

B \ A	5'		10'		15'		20'		25'		MAX	
	Cf	Cs	Cf	Cs	Cf	Cs	Cf	Cs	Cf	Cs	Cf	Cs
25'											*8,600	*8,600
20'											*8,500	8,400
15'										13,300	*8,600	7,400
10'					*26,900	*26,900	*20,700	18,200	*15,500	12,600	*9,000	6,900
5'			*20,500	*20,500	*33,000	26,100	*23,900	16,800	*17,300	11,800	*9,700	6,600
0'			*19,900	*19,900	*36,500	24,200	*26,100	15,800	*19,100	11,200	10,700	6,700
-5'	*16,500	*16,500	*26,300	*26,300	*37,300	23,400	25,900	15,100	18,700	10,800	12,000	7,100
-10'	*24,900	*24,900	*35,700	*35,700	*35,500	23,200	25,600	14,900	18,200	10,700	13,400	7,900
-20'			*31,600	*31,600	*23,400	*23,400	*17,000	15,700	18,100		*14,300	13,700