

KOMATSU

AVAILABLE FOR RENT AT

ATS
EQUIPMENT INC.

www.atsequipment.com



PC200LC-7

HYDRAULIC EXCAVATOR

GALEO

FLYWHEEL HORSEPOWER

143 HP @ 1950 rpm

OPERATING WEIGHT

45,040–46,870 lb

BUCKET CAPACITY

0.65–2.0 yd³

ATS EQUIPMENT INC.

Construction Equipment & Supplies

Rentals • Sales • Service

BOSTON, MA
(617) 825-3600

AUBURN, MA
(508) 832-8500

CANDIA, NH
(603) 483-2100

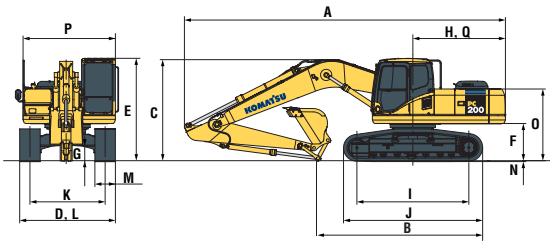
KOMATSU PC200LC-7

ATS EQUIPMENT INC.
www.atsequipment.com

HYDRAULIC EXCAVATOR



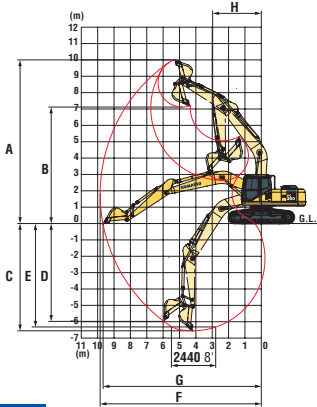
DIMENSIONS



	Arm Length	7'11"	9'7"
A	Overall length	31'2"	30'11"
B	Length on ground (transport):	19'4"	16'5"
C	Overall height (to top of boom)	10'6"	9'9"
D	Overall width	10'5"	
E	Overall height (to top of cab)	9'10"	
F	Ground clearance, counterweight	3'7"	
G	Ground clearance (minimum)	1'5"	
H	Tail swing radius	9'0"	
I	Track length on ground	11'11"	
J	Track length	14'7"	
K	Track gauge	7'10"	
L	Width of crawler	10'5"	
M	Shoe width	31.5"	
N	Grouser height	1.0"	
O	Machine cab height	6'10"	
P	Machine cab width	8'11"	
Q	Distance, swing center to rear end	8'11"	



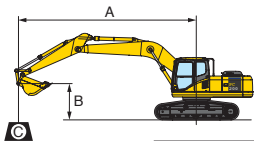
WORKING RANGE



	Arm	7'11"	9'7"
A	Max. digging height	32'2"	32'10"
B	Max. dumping height	22'7"	23'4"
C	Max. digging depth	20'0"	21'9"
D	Max. vertical wall digging depth	17'10"	19'7"
E	Max. digging depth of cut for 8' level	19'0"	20'11"
F	Max. digging reach	30'9"	32'5"
G	Max. digging reach at ground level	30'2"	31'10"
H	Min. swing radius	10'2"	10'0"
SAE rating	Bucket digging force at power max.	31,080 lb	31,080 lb
	Arm crowd force at power max.	27,780 lb	22,710 lb
ISO rating	Bucket digging force at power max.	33,510 lb	33,510 lb
	Arm crowd force at power max.	28,660 lb	24,250 lb



LIFTING CAPACITIES



A: Reach from swing center
B: Bucket hook height
C: Lifting capacity
Cf: Rating over front
Cs: Rating over side
⊙: Rating at maximum reach

Conditions:
Arm: 2925 mm 9'7"
Boom length 5700 mm 18'8"
Bucket 0.8 m³ 1.05 yd³ (SAE heaped)
-Bucket weight: 628 kg 1,385 lb.

Shoe: 28" triple grouser												
B	5'		10'		15'		20'		25'		⊙ MAX	
	Cf	Cs	Cf	Cs	Cf	Cs	Cf	Cs	Cf	Cs	Cf	Cs
25'							*8,300 lb	*8,300 lb			*6,100 lb	*6,100 lb
20'							*11,500 lb	10,200 lb			*5,800 lb	*5,800 lb
15'							*13,300 lb	9,900 lb	*10,250 lb	6,600 lb	*5,800 lb	5,600 lb
10'			*30,100 lb	29,300 lb	*19,700 lb	14,900 lb	15,300 lb	9,400 lb	10,500 lb	6,400 lb	*6,100 lb	5,100 lb
5'			*16,500 lb	*16,500 lb	23,900 lb	13,800 lb	14,700 lb	8,800 lb	10,250 lb	6,100 lb	*6,700 lb	4,800 lb
0'			*17,700 lb	*17,700 lb	23,000 lb	13,000 lb	14,200 lb	8,350 lb	10,000 lb	5,900 lb	*7,800 lb	4,900 lb
-5'	*15,000 lb	*15,000 lb	*24,700 lb	*24,700 lb	22,600 lb	12,700 lb	14,000 lb	8,200 lb	9,900 lb	5,800 lb	9,200 lb	5,400 lb
-10'	*23,200 lb	*23,200 lb	*35,400 lb	25,300 lb	22,700 lb	12,700 lb	14,000 lb	8,200 lb			10,900 lb	6,500 lb
-15'			*34,900 lb	26,100 lb	23,100 lb	13,100 lb					15,500 lb	9,200 lb

* Load is limited by hydraulic capacity rather than tipping. Ratings are based on ISO Standard No. 10567. Rated loads do not exceed 87% of hydraulic lift capacity or 75% of tipping load.

Shoe: 31.5" triple grouser												
B	5'		10'		15'		20'		25'		⊙ MAX	
	Cf	Cs	Cf	Cs	Cf	Cs	Cf	Cs	Cf	Cs	Cf	Cs
25'							*8,300 lb	*8,300 lb			*6,100 lb	*6,100 lb
20'							*11,500 lb	*10,300 lb			*5,800 lb	*5,800 lb
15'							*13,300 lb	10,000 lb	10,250 lb	6,700 lb	*5,800 lb	5,700 lb
10'			*30,100 lb	*29,700 lb	*19,700 lb	15,100 lb	*15,500 lb	9,500 lb	10,700 lb	6,500 lb	*6,100 lb	5,100 lb
5'			*16,500 lb	*16,500 lb	24,200 lb	13,900 lb	14,900 lb	9,000 lb	10,400 lb	6,200 lb	*6,700 lb	4,900 lb
0'			*17,700 lb	*17,700 lb	23,300 lb	13,200 lb	14,500 lb	8,500 lb	10,100 lb	6,000 lb	7,800 lb	4,900 lb
-5'	*15,000 lb	*15,000 lb	*24,700 lb	*24,700 lb	22,900 lb	12,900 lb	14,200 lb	8,300 lb	10,000 lb	5,900 lb	9,300 lb	5,500 lb
-10'	*23,200 lb	*23,200 lb	*35,400 lb	25,600 lb	23,000 lb	12,900 lb	14,200 lb	8,350 lb			11,100 lb	6,600 lb
-15'			*34,900 lb	26,400 lb	23,500 lb	13,300 lb					15,800 lb	9,300 lb

* Load is limited by hydraulic capacity rather than tipping. Ratings are based on ISO Standard No. 10567. Rated loads do not exceed 87% of hydraulic lift capacity or 75% of tipping load.

OPERATING WEIGHT (APPROXIMATE) 45,040– 46,870 lb

Operating weight including 18'8" one-piece boom, 9'7" arm, SAE heaped m³ 1.05 yd³ backhoe bucket, rated capacity of lubricants, coolant, full fuel tank, operator, and standard equipment.

ENGINE

Model..... Komatsu SAA6D102E-2
Type..... Water-cooled, 4-cycle, direct injection
Aspiration..... Turbocharged and air-air aftercooling
Number of cylinders..... 6
Bore..... 4.02"
Stroke..... 4.72"
Piston displacement..... 359 in³
Power rating (*SAE J1995 conditions)
*Gross..... 150 HP 111.9 kW @ 1950 rpm
Flywheel..... 143 HP 106.6 kW @ 1950 rpm
Governor..... All-speed control, mechanical
EPA, EU, and Japan Tier 2 emissions certified.

HYDRAULICS

Type..... HydrauMind
(Hydraulic Mechanical Intelligence New Design)
system, closed-center system with load sensing
valves and pressure compensated valves

Number of selectable working modes..... 4

Main pump:

Type..... Variable displacement piston type
Pumps for Boom, arm, bucket, swing, and travel circuits
Maximum flow..... 113 U.S. gal/min
Supply for control circuit..... Self-reducing valve

Hydraulic motors:

Travel..... 2 x axial piston motor with parking brake
Swing..... 1 x axial piston motor with swing holding brake

Relief valve setting:

Implement circuits..... 5,400 psi
Travel circuit..... 5,400 psi
Swing circuit..... 2,412 psi
Pilot circuit..... 2,470 psi

Hydraulic cylinders:

(Number of cylinders – bore x stroke x rod diameter)
Boom..... 5.1" x 52.5" x 3.5"
Arm..... 5.3" x 58.7" x 3.7"
Bucket..... 4.5" x 44.1" x 3.2"

DRIVES AND BRAKES

Steering control..... Two levers with pedals
Drive method..... Hydrostatic
Maximum drawbar pull..... 40,120 lb
Gradeability..... 70%, 35°
Max. travel speed: High..... 3.4 mph
(Auto-Shift) Mid..... 2.5 mph
Low..... 1.9 mph
Service brake..... Hydraulic lock
Parking brake..... Mechanical disc brake

SWING SYSTEM

Drive method..... Hydrostatic
Swing reduction..... Planetary gear
Swing circle lubrication..... Grease-bathed
Service brake..... Hydraulic lock
Holding brake/Swing lock..... Mechanical disc brake
Swing speed..... 12.4 rpm
Swing torque..... 48,124 ft lbs

UNDERCARRIAGE

Center frame..... X-frame
Track frame..... Box-section
Seal of track..... Sealed track
Track adjuster..... Hydraulic
Number of shoes (each side)..... 49
Number of carrier rollers..... 2 each side
Number of track rollers (each side)..... 9

COOLANT AND LUBRICANT CAPACITY (REFILLING)

Fuel tank..... 105.7 U.S. gal
Coolant..... 5.9 U.S. gal
Engine..... 6.3 U.S. gal
Final drive, each side..... 1.2 U.S. gal
Swing drive..... 1.7 U.S. gal
Hydraulic tank..... 37.8 U.S. gal

ATS EQUIPMENT INC.

Construction Equipment & Supplies

Rentals • Sales • Service

BOSTON, MA
(617) 825-3600

AUBURN, MA
(508) 832-8500

CANDIA, NH
(603) 483-2100