

ASV

AVAILABLE FOR RENT AT

ATS
EQUIPMENT INC.

www.atsequipment.com



RC-100

Posi-Track™ Rubber Track Skid Steer Loader

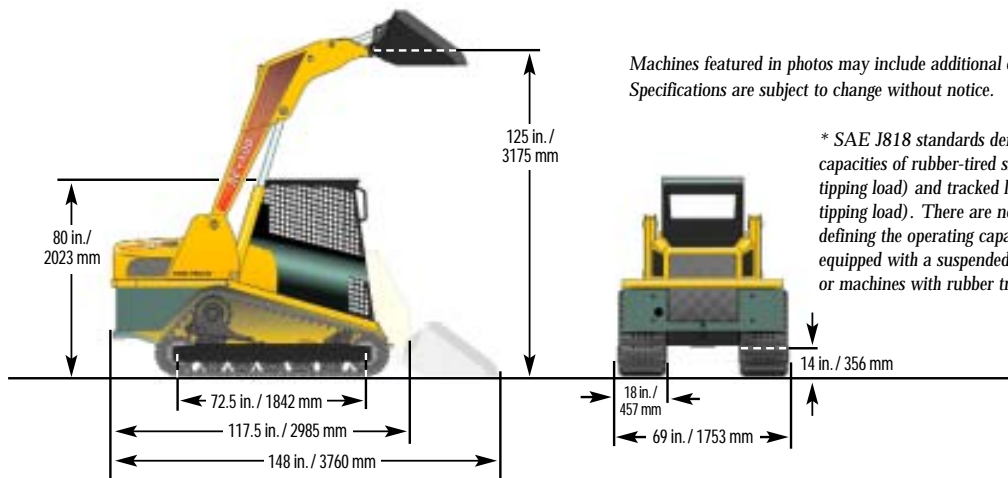
ATS EQUIPMENT INC. Construction Equipment & Supplies Rentals • Sales • Service

BOSTON, MA
(617) 825-3600

AUBURN, MA
(508) 832-8500

CANDIA, NH
(603) 483-2100

Posi-Track™ Rubber Track Skid Steer Loader



Machines featured in photos may include additional equipment. Specifications are subject to change without notice.

* SAE J818 standards define operating capacities of rubber-tired skid steers (50% tipping load) and tracked loaders (35% tipping load). There are no standards defining the operating capacity of machines equipped with a suspended undercarriage or machines with rubber tracks.

Machine Weight

Operating weight:	10,150 lb. / 4604 kg.
Shipping weight, w/out bucket:	9,200 lb. / 4173 kg.
Ground pressure:	
@ shipping weight	3.5 psi / 24 kPa
@ operating weight	3.8 psi / 26.7 kPa

Track Specifications

Track width:	18 in. / 457 mm
Track length, on ground:	72.5 in. / 1842 mm
Ground contact area:	2,610 in. ² / 1.68 m ²

Auxiliary Hydraulic Pump

Low flow, maximum:	20 gpm / 76 lpm
High flow, maximum:	38 gpm / 144 lpm
Pressure:	3,300 psi / 22 737 kPa

Engine

Type (turbocharged diesel):	Perkins 1104C-44T
Displacement:	268 in. ³ / 4.4 L
Gross power @ 2300 rpm:	99.5 hp / 74 kW
Torque, peak:	304 ft-lb / 412 Nm

Operating Specifications

Tipping load:	7,600 lb. / 3447 kg
Operating capacity 50% tip load*:	3,800 lb. / 1724 kg
Operating capacity 35% tip load*:	2,660 lb. / 1207 kg
Travel speed (low/high), max.:	6/11.5 mph / 9.7/18.5 kmh

Service Refill Capacities

Fuel tank:	26 gal. / 98 L
Hydraulic system:	20 gal. / 76 L
Engine coolant:	3.125 gal. / 12 L
Engine oil, inc. filter:	8.5 qt. / 8 L

Standard Features

- Air cleaner, dual-stage
- Alternator, 85-amp
- Auxiliary hydraulics:
 - low and high flow
 - load-sensing
- Battery, 950 CCA
- Brake, parking
- Bucket controls, pilot hyd.
- Drive control, pilot hyd.
- Drive motors, 2-speed
- Electrical system, 12-volt
- Engine, Perkins 1104C-44T
- Final drive, direct hydrostatic
- Fuse box, automotive type
- Gauges:
 - fuel level
 - hour meter
 - slope indicator
- Heater, engine block
- Hitch receiver
- Ignition switch, key
- Interior dome light

Options

- Air conditioning/heater
- Back-up alarm
- Beacon, rotating
- Brushguards
- Cab enclosures, std. or deluxe
- Cab insulation
- Case-style controls
- Coolant temp. gauge

- Lap bar/arm rest
- Operator presence switch
- Posi-Power Control (PPC)
- Quick-attach, hydraulic
- Quick-connect auxiliary hydraulic fittings
- ROPS/FOPS canopy, tilt-up
- Rubber track undercarriage
- Screened engine compartment
- Throttle, hand-operated
- Tie-down loops, front/rear
- Working lights, halogen:
 - four front, fixed
 - two rear, fixed
- Warning lights:
 - coolant temp
 - engine oil pressure
 - hot hydraulic oil
 - low battery
- Wiring - pre-installed for all accessory switches